

Third Annual Ella Sharp Art & Wine Tickets Now on Sale!

The Ella teams up again with the SE Michigan Pioneer Wine Trail and regional artists for a day of art, wine tasting, music, and seminars on Saturday, June 9. Local wineries participating are: Cherry Creek Cellars, Lone Oak Vineyard Estates, Pentamere Winery, Sandhill Crane Vineyards, St. Julian Winery, Burgdorf's Winery, and Uncle John's Fruit House Winery. Bottles of wine are available for purchase in "Ella's Wine Shop."

Attendees receive a ticket good for 12 tastes of wine. New this year is the opportunity to purchase a full glass of wine. Museum members qualify for complimentary wine—please visit the Membership tent to see how!

Festival attendees can visit the tasting booths and sign up for a variety of wine-related seminars such as *Wine Appreciation*, *Elements of Food & Wine*, *Wine Pairings*, and *Home Winemaking*. Throughout the festival enjoy live music featuring regional bands playing a variety of music styles including blue-grass, jazz, and acoustic blues. Food will be available in Ella's Granary Restaurant and outdoors.

Winery booths and tastings, music, and wine sales begin at noon and conclude at 8 p.m. From 10 a.m. to noon attendees may preview the dozens of artist booths where regional artists will have their pieces for sale throughout the festival.

Photography, painting, sculpture, textiles, and ceramics are just some of the featured works.

Advanced tickets (\$15) are available at the Museum, participating wineries, and Cork 'n' Cap. Tickets include two tastings at each of the six winery booths. Tickets purchased at the door are \$18. Additional tasting tickets will be available at the festival. An "art fair only" ticket is available for \$5. Attendees under 21 years of age are admitted for \$5.



Wonder Who We Are?



The "Peek-a-Boo! Who Are You" class poses with their creations. The Spring Break One-Day-Wonder class learned about masks from

different cultures around the world then made their own.

News

THE ELLA RECEIVES NEW GRANTS FOR WINGS PROGRAM

The Ella has received a new grant of \$4,500 in support of WINGS programming from the Jackson County Community Foundation as well as a grant from the Jackson Audubon Society for \$2,000 also to support the WINGS program. Both grants will enable The Ella to carry its visual arts mission to a greater audience and to a greater number of schools.

DELTA WATERFOWL AND THE ELLA TO HOST WINGS FUNDRAISER

Delta Waterfowl Foundation and The Ella will host a fundraiser for the WINGS program on Friday, May 18th from 6-10 p.m. in the Grand Community Room. The public is invited to this event which includes dinner and an open bar and features auctions, raffles and giveaways. Many of the items to be auctioned and raffled are waterfowl themed including fine art. There will also be non-waterfowl items such as sports-related items, vacation trips, and services. Attendees will also be the first to view the newest exhibit installation in the Andrews Gallery of Wildlife Art. Door prizes will be given to each attendee. The event will raise funds for WINGS which are school outreach programs associated with the Andrews Gallery of Wildlife Art. For example, WINGS assists schools and teachers in creating entries for the Michigan Federal Junior Duck Stamp competition. Tickets to the event are \$85. Call (517) 787-2320 for more information or to order tickets.

CLASS DATE CHANGE

The date of the *Self Portrait Paper Doll* workshop has been changed to Saturday, May 19. All other information remains the same.

JAS AND THE ELLA CREATE PARTNERSHIP

The Jackson Audubon Society (JAS) and The Ella have formed a partnership in support of the WINGS Program. Because of the nature of wildlife art, the WINGS program needs access to expertise in ornithology which will be provided by JAS and Delta Waterfowl Foundation. "We couldn't be more thrilled to be partners for the WINGS program. This program is an awfully important visual arts program but it also teaches conservation and the ecology of birds," said Connie Spotts, President, JAS. JAS has also permanently moved their activities and meetings to The Ella making it their new home. "Jackson Audubon Society and Delta Waterfowl have many of the same goals especially when it comes to children and forging a new generation of conservation-minded citizens. The Ella has the right idea and we support them 100%," said Scott Berg, Regional Director, Delta Waterfowl Foundation.

VOLUNTEER BREAKFAST

Each year Museum volunteers are feted by Museum staff with a homemade breakfast. All volunteers are invited on Monday, June 4, to come "rest on their laurels" for a morning of gratitude served with a side of some yummy breakfast treats. The fun begins at 9 a.m. Invitations will be mailed out in May.

THE ELLA'S ROAD TRIP

Doing some Michigan roadtripping this year? Be sure to take a break at the Coldwater, Michigan Welcome Center. The Ella is one of four featured Michigan sites there this

year with an installation promoting the Andrews Gallery of Wildlife Art. Traveling mini-

exhibitions such as this one allow the Museum to encourage new audiences to visit. Stay tuned to see where The Ella will travel to next!



SUE FOLMSBEE

At the heart of a Museum are its loyal volunteers. The nature of Museums requires a lot of “uncounted” hours in all areas-- programs, administration, maintenance, collections. The Ella’s heart is a little bruised this month for on March 24 Sue Folmsbee passed away in her sleep. Sue put in countless hours in over 30 years of Museum volunteering. Her efforts were most noticed in the Friends Gift Shop where she served many years as volunteer Chairman. Sue was just one of the many loyal, friendly faces that make up the volunteer “staff” of The Ella but she’s the perfect example of the kind of person that really makes our Museum such a great place. We will miss her!

SPEND A DAY IN DETROIT

Travel with the Museum’s Domestic Travel Committee on June 1 to Detroit for a day of music and art with a Detroit Symphony Orchestra Coffee Concert and visit to the Cranbrook Art Museum. The DSO concert will feature the music of composer John Williams who has set aside his usual movie themes for the Detroit premiere of his Concerto for Horn. Following a morning at the DSO participants will enjoy lunch and a tour at Cranbrook. Costs are \$90 per Museum member and \$100 per non-member. Transportation, admissions, and meals are included. Sign up deadline is May 4.

SAVE THE DATE FOR SHAW

The Domestic Travel Committee announces an autumn visit to the Shaw Festival at Niagara-on-the-Lake (Ontario) to take place on September 25-27. The trip will include theater excursions and a trip to the Buffalo (NY) Albright-Knox Art Gallery. Details will follow in the July/August newsletter.

HISTORY & ART IN THE PARK GETS A NEW NAME!

Look for the 2007 HAIP schedule in your May mailbox... with a new name— *Summer’s Cool at The Ella!* You’ll find the same great quality and familiar faces along with some new offerings sure to keep any kid busy this summer. *Sponsored by MACI.*

WORLD CERAMICS LECTURE SERIES CONCLUDES

Clay Feet: A Travel through Art and Time lecture series concludes on Wednesday, May 9, at 7 p.m. Attendees will “travel” with Mary Humphrey to vast and everchanging China, including Beijing, with the beautiful Forbidden City, Great Wall, Xiian, and the incredible Terra Cotta Warriors. “My second trip to China is a ceramic trip in search of ancient Chinese folk potteries and water reduction kilns. In this trip I am enjulfed in the everyday life of the rural Chinese people and their ancient culture and arts.”

The *Clay Feet* lecture admission is \$10 for Museum members and \$15 for non-members. The evening features a cash wine bar, punch, and light snacks. Reservations are strongly encouraged.

DON’T BE SUCH A CHICKEN!

Sign up for the *Basic Watercolor for Chickens*. A summer session will be held Fridays, June 15, 22, and 29, 9:30 a.m. to noon. (Perfect for parents with a child in the Summer’s Cool at The Ella program program!) Costs are \$45 per Museum member and \$54 for non-members.

YOUTH SYMPOSIUM MEETS AT THE ELLA

The third annual Youth Art Symposium (YAS) will meet at the Museum on May 3 to explore “Art Beyond the Classroom.” The YAS is provided by the Arts and Cultural Alliance of Jackson County to area high school junior and senior art students who will spend a day learning how to make a living using the talents and skills and abilities they are honing in the art field. The Museum is proud to be chosen as the venue for this year’s event and, as in the past, will work with the Alliance to connect working artists with the students.

Exhibits

ANDREWS GALLERY OF WILDLIFE ART

On May 18th, the Andrews Gallery of Wildlife Art will unveil its summer exhibition. Seventeen artists will be exhibited with 46 new works and will be joined by fourteen crowd favorites for an encore showing this summer. The exhibition will feature every media with bronzes, paintings, and carvings in addition to etchings and watercolors which have never been exhibited to the public. A total of 23 species will be showcased including a Scissor-Tailed Flycatcher, Merlin, Red-Shouldered Hawk, a Lynx, and a Kirtland's Warbler.



Gadwall by Jason Lucio

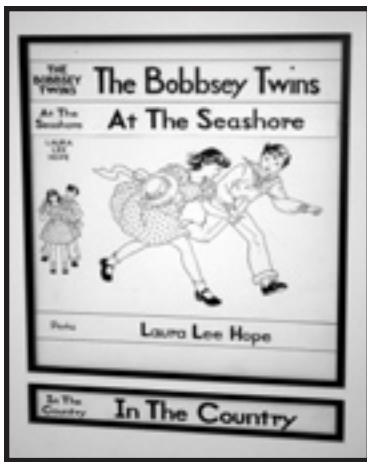
EMMET GALLERY

The Fine Art of Illustrating for Children

APRIL 8 THROUGH JUNE 27, 2007

Ask any child and they'll tell you—a picture truly is worth a thousand words—particularly when it is illustrating a beloved story. This exhibition of the art that illustrates favorite children's stories is on loan from the Francis and Mary Lois Molson Collection at Central Michigan University. Included in the exhibit are David Small, David Delamare, and many others who gave life to so many childhood friends.

The Fine Art of Illustrating is sponsored by MACI.



Cover Art for The Bobbsey Twins, anonymous artist

HURST GALLERY

Comfort & Joy: Quilts and Coverlets With a Story

APRIL 1 THROUGH JUNE 24, 2007

A special re-exhibition of quilts, coverlets, and their stories from the Museum's textile collection. This very popular exhibit was forced to close in late 2005 after only two weeks of exhibition due to the construction of the new galleries. This is a rare second chance to see this portion of the Museum's beautiful textile collection. Included in this exhibition are the "jilted tailor" quilt, a friendship quilt, and a pieced quilt using scraps from an area corset factory.



Quilt made entirely of ribbons, c.1904

PYRON GALLERY

And the Bride Wore... A Collection of Bridal Fashions

FEBRUARY 1 THROUGH JULY 29, 2007

Something old, something new(er), something borrowed, something blue—these gowns from the Museum's textile collection and on loan were worn by area brides through the years as they walked down the aisle to meet their grooms. Included are Ella's two-piece white moiré silk dress worn in 1881; a dress made and worn by Ruth Ayres Joughin in 1964 and by her daughter, Terri Joughin Reynolds, in 1994; Elizabeth Horn Walker's 2004 white silk; and Sarah Grimke Weld's 1868 dress. Also included are photos, invitations, accessories, cake toppers and wedding gifts. Also on exhibit is an awe inspiring gown designed by Giovanni Casablanca. It is adorned with bohemian crystals, silver threads, and hand-painted details reflecting the dreams and fantasies of many brides.



Hazel Apgar Estry's pale blue and pink chiffon dress worn in 1934

And the Bride Wore... is sponsored by Roma Sposa Designs.

HILLSIDE FARMHOUSE & MERRIMAN-SHARP INTERPRETIVE CENTER

Get to know Ella and her family through the exhibit in the Merriman-Sharp Interpretive Center. Photos of the family as well as a brief history of the house, the park, and some of the many contributions Ella made to the community can be viewed in the center. Guided tours of Hillside Farmhouse are given Tuesday through Saturday at 11 a.m., 12:30 p.m., 2p.m., and 3 p.m. Tickets are available at the reception desk in the Museum lobby.

JACKSON CIVIC ART ASSOCIATION

Ongoing in Grand Community Room Hallway

The JCAA continuously displays the works of its members in a rotating exhibit in the hallway off the Grand Community Room. All of the pieces are for sale to the public with a percentage of the proceeds going towards the JCAA's commitment to the Museum.

JACKSON HISTORY GALLERY

A History of Jackson

Take a walk through the distant and recent past in this exhibition of earlier Jackson. Settlement, industry, and society are examined through artifacts from the Museum collection.

FROM THE COLLECTION: FILLING THE GAP OF THE 20TH CENTURY

The Museum Collections and Exhibits Department is charged with the collecting, care, and keeping of the thousands of objects in Museum storage and on exhibit. These items range from the large (historic buildings, the Marion-Handley automobile) to the tiny (buttons, military medals), fragile (Ella's 1881 wedding dress) to the awkward (canoes). In the past months, the C&E department has been diligently working on moving the collections into the new storage areas created as a result of the capital campaign. "It's been a huge task," says Jim Zuleski, Director of C&E, "But

an extremely rewarding task as it has allowed us to see where the 'gaps' in our collection are." Zuleski notes that while the mid-late 19th century is well represented



Photograph of the Sparks wedding gifts at the brides parents home, 1954. Gift of Nan and Sparry Sparks.

(with minor gaps), the 20th century has some serious voids—a common problem with a century so recently experienced. Want to add to the Museum collection? Contact the Collections and Exhibits Department at the Museum at (517) 787-2320.

Recent 20th Century artifacts that have been donated to the Museum include these items from the mid-century:



Early plastic toy nursery rhyme figures, 1955. Gift of Dorothy Dyer.

UPCOMING EVENTS

CALENDAR ITEMS

For more information about any of the events listed or to make reservations, contact the Museum at (517) 787-2320. Or visit the Museum website at www.ellasharp.org

VOLUNTEERS:

The Friends of the Ella Sharp Museum of Art & History have their final luncheon and meeting of the season **at noon on Monday, May 14**—and it's a good one. Tim Bos, I.F.A. owner of the Jackson Antique Mall will be on hand with the topic, "If You Can Carry It Yourself Bring It in for a 'Look See.'" Reservations for the luncheon are due on Friday, May 11 at noon.

Eat, Drink, and Be Merry at the Annual Volunteer Appreciation Breakfast on **Monday, June 4 at 9 a.m.** (No need to tip those good looking waiters.)

ALL:

The Youth Art Symposium meets at The Ella on May 3 bringing 150-200 area high school junior and senior art students together.

Early Michigan Festival Days has Farm Lane hopping on **Tuesday, May 8, through Friday, May 11.**

Clay Feet: A Travel through Art and Time lecture series concludes on **Wednesday, May 9, at 7 p.m.** Attendees will "travel" with Mary Humphrey to vast and everchanging China. Reserve a place today.

Delta Waterfowl Foundation and The Ella will host a fundraiser for the WINGS program on **Friday, May 18th from 6-10 p.m.** in the Grand Community Room.

Enjoy a Detroit Symphony Orchestra Coffee Concert and lunch and a tour at the Cranbrook Art Museum on **June 1** with the Domestic Travel Committee. Sign up deadline is **May 4.**

Don't miss the 2007 Ella Sharp Art & Wine Festival on Saturday, June 9. Wine tastings, food, and music are all available throughout the day from **noon to 8 p.m.** A special art-only preview starts at **10 a.m.**

Summer's Cool at The Ella! (formerly known at History & Art in the Park) begins on June 18. Camp offerings go out in the mail in May.

Basic Watercolor for Chickens, a summer art session for adults will be held **Fridays, June 15, 22, and 29, 9:30 a.m. to noon.** Sign up today.

THE KIDS TAKE OVER!

Make a date to enjoy a Granary lunch **May 8-11** when Early Michigan Festival Days (EMFD) fills Farm Lane with children from Jackson and surrounding counties. Each year The Ella staff works with Jackson High School history students for several weeks training the students to "interpret" the past and become "historic presenters" for the week. During EMFD the Museum will welcome hundreds of elementary students who visit "stations" around the Museum grounds that help them explore what a child's life was like in the 19th century. Classes experience chores, formal schooling, Victorian manners, farming, bartering/trading, and more in interactive games and exercises. A seat on the Farm Lane side of the Granary is a great viewing spot!

ELLA SHARP MUSEUM OF ART & HISTORY SUMMER HOURS

The Museum is open

Tuesday - Friday 10 a.m. to 4 p.m.,
Weekends 11 a.m. to 4 p.m.

Ella's Granary Restaurant is open

Tuesday - Saturday 7:30 a.m. to 2:30 p.m.

The Friends Gift Shop is open
Tuesday - Friday 10 a.m. to 4 p.m.
and on Saturday noon to 3 p.m.

CONTRIBUTIONS

February 1, 2007 thru March 28, 2007

MEMORIALS

FLORENCE FREY

Mary Deming
Barbara Franklin

ANN MUNRO KENNEDY

Mrs. Robert D. Handley

JACK MOSLEY

Anonymous
Charles and Janet Bilby
Art and Marianne Moller
Gloria Stevens
Margaret Tietjen

BERNICE OTIS

Isabelle Brown
Patricia Heiland
Victoria Munson
Phyllis Swonk

DR. CARL STOLBERG

Anonymous

HONORARIUM

In Honor of HARRY STANTON'S 90TH Birthday

Bernard and Alice Reizner

CONTRIBUTIONS TO THE COLLECTION

February 1, 2007 thru March 28, 2007



Dorothy Dyer
Sheryl Eastman
John Gruel
Margaret A. Hiatt
Nancy Hinton
Kay Houchin
Lee Hudson
Susan L. Karl
Rodney & Colleen Kirtland
Bill and Janet Layton
Scott Sibson
Nan and Sparry Sparks
Ed Tomczyk
Susan and Ron Viccelli
Jim Zuleski

Classes from Bennett Elementary School had a great time on their recent day of "Pioneer Living." The third graders were rewarded with a little 19th century style recess time.



ELLA SHARP
MUSEUM
OF ART AND HISTORY

3225 FOURTH STREET JACKSON, MI 49203

NONPROFIT ORG.
US POSTAGE
PAID
PERMIT 96
JACKSON, MI

NEWS

MAY/JUNE 2007

ELLA SHARP
MUSEUM
OF ART AND HISTORY



Summer's Cool at The Ella!

6/9 3rd Annual Ella Sharp
Art & Wine Festival

**An Evening of
Fire & Ice** **7/20**

7/24-26 Summer Days
at
Hillside Farm