

## A *Friend-ly* Send-Off for Lynne

The Friends of the Ella Sharp Museum of Art and History invite you to a reception honoring retiring President Lynne Loftis on Sunday, April 20, from 2 - 4 p.m. Lynne has been at the Museum since the early 1970s, wearing many "hats." During her years at the Museum she helped to develop and implement many educational programs including the ever popular Pioneer Living. Lynne recently oversaw the very successful *Celebrate the Ella! 40th Anniversary Campaign* under which the construction of the Museum's two newest galleries and much needed storage areas were realized. One of those new galleries— the Jackson History Gallery is a long held dream of Lynne's— a permanent place in which to tell the story of Jackson.

Please join the Friends, the Museum Board, Museum staff, Members, and the community in thanking Lynne for her many years of service to The Ella. Light refreshments will be served.



## DIY's Bill van Gilder visits ESMAH



Bill van Gilder is the creator and host of *Throwing Clay*, a DIY Network television series about making pottery. He visits The Ella March 14-16 to share his experiences and expertise in lectures, workshops, and the Youth Art Symposium.

His visit coincides with a ceramics exhibit *From the Potter's Hands* featuring van Gilder's work and the work of a dozen other regionally known ceramic artists. Area art students will benefit from the techniques and experiences of van Gilder on Friday, March 14 at the Youth Art Symposium. Co-presented by the Arts and Cultural Alliance of Jackson County and The Ella, the Symposium brings together high school art students, art teachers, and working artists with a full day of lectures and break-out sessions featuring different educational and professional "tracks" that an artist might pursue.

For more information about the 3 Days of Clay workshops, *From the Potter's Hands* exhibit, and the Youth Art Symposium, contact the Museum at (517) 787-2320 or visit the Museum website at [www.ellasharp.org](http://www.ellasharp.org).

**INSIDE: MARCH & APRIL CALENDAR OF EVENTS...**

# News

## FROM THE PRESIDENT

Dear Members,

It seems strange to be winding down after my 30+ years here at The Ella. I can't begin to thank everyone for all they have done for the Museum, and for me, over the years. I have been fortunate to work along side great co-workers, boards, members, and volunteers who have all been committed to making The Ella a success.

I have never been bored, I have sometimes been angry, I have often been frustrated and tired— but I have always felt incredibly fortunate to work somewhere that I felt passionate about. The Ella is a special place— a place that touches the lives of people and makes a real difference in the community.

I have been truly blessed to be a part of it, and I plan to continue to stay a part of it as a volunteer for many years to come.

Lynne

## SPRING BREAK!

Spring Break is One-Day-Wonderful! Sign up for one day or the whole week. On Monday, March 31, *Fly Away* to a special planetarium show and then construct windy contraptions. On Tuesday, April 1, create and design a *Puppet Show*. Go *Behind the Scenes of The Ella* on Wednesday, April 2. Step back into the past on Thursday, April 3, with a day of *Traditional Arts and Crafts*. The week concludes on Friday, April 4, with an investigation into *Museum Mystery Day*. Spring Break One-Day-Wonders begin at 9:30 a.m. and conclude at 3:30 p.m. Bring a lunch, the Museum will provide a morning and afternoon snack. All supplies are included. Individual One-Day-Wonders are \$25 per Member and \$30 for the general public.

## WE SHOW YOU OURS, YOU SHOW US YOURS...

The Collections and Exhibits Department is assembling an upcoming (October-January) exhibit on "collecting." Museum members with collections (glassware, art, dolls, cars, art, shoes, etc.) who are willing to loan them are asked to contact Katie Hill, Museum Exhibit Coordinator (787-2320, ext. 247) for more information. "We'll highlight Jackson's interests through personal collections," says Katie.

## ELLA IN CYBERSPACE

Can't make it into The Ella? Visit us on-line. View the latest class listings, calendar events, and even this newsletter all with a click of the mouse. At [www.ellasharp.org](http://www.ellasharp.org) you can donate to the Museum, sign up for classes and workshops, even purchase a membership.

Sadly, you can't get a cup of delicious Italian tomato soup from Ella's Granary Restaurant on-line-- but you can enjoy free wireless in the Granary restaurant...

## BUY! BUY! BUY!

Friends Gift Shop buyers visited Chicago's merchandise show in January. New spring items are arriving in time for Mother's Day gift shopping. Need a "Jackson" gift? A DVD of the Cascades Falls, Museum notecards, and Jackson calendars and notecards are still available. Remember-- when you shop at the gift shop you benefit the Museum.

## A GRAND DAY OUT

The Museum's Domestic Travel Committee announces a day trip to Grand Rapids on Thursday, May 22. Included is a guided tour of the new Grand Rapids Art Museum (GRAM) followed by a self-guided tour of the Gerald R. Ford Presidential Museum. Dinner is at the acclaimed Tapas Bistro, *San Chez*, where specialty foods will be prepared just for The Ella's group. Transportation, Museum admissions, and dinner is included in the price (\$95.00 for Members, \$105.00 for non-members). Call the Museum to reserve your place today. Also coming up is a trip to Northern Michigan in September-- details in the next Newsletter.

# From the Collection

*Ella*

## STORING THE COLLECTION

By Judy Horn, Collections Manager

Since the museum opened in 1965 we have collected artifacts to document the history of Jackson, furnish our historic buildings, and give us a glimpse into the lives of the people who lived before us. Our shelves are filled with everything from the well worn shoes of a toddler, to the tools used by a workman on the job in a local factory. Because of the generosity of so many, our need for space has many times outgrown our original storage area which was located in a small room in the basement of Ella's Hillside Farmhouse. With the addition of our new collections storage areas in 2006 and a total of ten thousand dollars in grants awarded us by the National Endowment for the Humanities to purchase storage materials, we proudly continue to practice the best in collections care.

Please join us for a tour of collections storage on Saturday, April 5, at 1:30 p.m. to see how we have taken advantage of our new space.



*The new collections storage area, under the Museum galleries, is shown at the far right and above. The old storage area, in Ella's Hillside Farmhouse cellar is shown above.*



## CONTRIBUTIONS

December, 2007 through January, 2008

### MEMORIALS

#### JOSEPHINE AVERY

The Grossi Family • Dallas and Nancy Hamilton

#### NANCY BABBS

Edie and Roger Gilbert • Mickey and Phil Johnston

#### JANE T. GRAVES

Isabelle Brown • Joyce Furman  
Sandra and David Howard

#### JOHN MACY

Ruth Mary Gentry • Lynne Loftis

#### ELIZABETH THORREZ

Rita Lundberg

#### TOM VAN SCHOICK

Mrs. Richard Deming

## CONTRIBUTIONS TO THE COLLECTION

December, 2007 thru January, 2008

Myrna Berlet • Stan and Suzanne Gibbs • Libby Greanya • Nancy Jo Hill • Mary Humphrey • Bill and Janet Layton • Doris McConkey • Maritom Pyron • Ken Schluckebier • Barbara Stanton • Richard and Leota Watterson • Janet Wendt

***Sam Knecht: Observations***

**JANUARY 26 THROUGH APRIL 20, 2008 IN THE EMMETT GALLERY**

The paintings of southern Michigan artist Sam Knecht are featured in a balanced collection of landscapes and portraits. Up Next: the Biennial Jackson Civic Art exhibit opening April 27.



*Observations: Sam Knecht*

***The Statewide Fine Arts Competition***

**JANUARY 12 THROUGH MARCH 8, 2008 IN THE HURST GALLERY**

See Juror Gary Wertheimer's picks for the awards given out by the Museum Friends (who sponsor the exhibit).



*Statewide Fine Arts Competition*

***From the Potter's Hands***

**MARCH 12 THROUGH MARCH 30, 2008 IN THE HURST GALLERY**

The work of 13 ceramic artists (including television's DIY Network's Bill van Gilder).

***Michigan Watercolor Society***

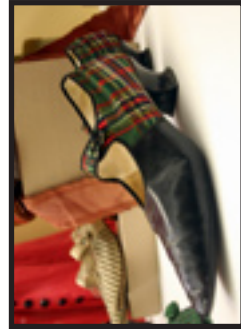
**APRIL 6 THROUGH JULY 7, 2008 IN THE HURST GALLERY**

Regional artists exhibit their new work.

Also on exhibit:

***It's All in the Details* (THROUGH SPRING 2008 IN THE PYRON GALLERY)** Fashion accessories from the Museum collection.

***The Jackson History Gallery, the Andrews Gallery of Wildlife Art, and the Merriman-Sharp Interpretive Center.***



*It's All in the Details*

### 10 Friends

**Monday, March 10, noon**

Join the Friends for lunch in the Granary at noon with a program following featuring The Ella's Sue Hitchingham on "Teddy Bears Past and Present." Phone the Museum by noon on Friday, March 7 to reserve your place for lunch.

### 12 EXHIBIT OPENING: From the Potter's Hands

**Wednesday, March 12**

The Hurst Gallery glazes over with the ceramic work of regional artists and that of TV's DIY Network show host Bill van Gilder.

### 14 3 Days of Clay with Bill van Gilder

**Friday-Sunday, March 14-16**

Dig into this unique opportunity to explore new techniques with Bill van Gilder. See the Museum website for a full conference listing and details.

### 14 Student Art Symposium

**Friday, March 14, All Day**

Area high school art students, teachers, and artists meet to explore personal and professional career paths.

### 23 MUSEUM CLOSED: Easter

**Sunday, March 23**

### 24 Gift Shop Meeting

**Monday, March 24, 10 AM**

All Gift Shop volunteers are urged to attend a training session and meeting in the Granary over coffee.

### 31 Spring Break One-Day-Wonders

**Monday, March 31-April 4**

Sign up your Spring Breaking child for a One-Day-Wonder or the whole week! See the Museum website for the entire Spring Class schedule.

### 30 Sugaring & Shearing Festival

**Sunday, March 30, noon-4 p.m.**

Celebrate the arrival of Spring! Glimpse into Hillside Farm's past with sheep shearing demos, maple sugaring presentations in the kitchen and woodshed, and a maple pancake buffet in the Granary. Also part of the day: children's art activities and new exhibits, maple products for sale, and other surprises. Admission is free with nominal fees for make and takes, refreshments, and first-floor tours of Ella's house.



*Are we too old to attend the Student Art Symposium?*

**5** Storage Walk

**Saturday, April 5, 1:30 PM**

Take a behind-the-scenes tour of the Museum storage areas with Judy Horn, Collections Manager.

**6** EXHIBIT OPENING & RECEPTION:  
Michigan Watercolor Society

**Sunday, April 6, 2-4 PM**

April showers bring beautiful watercolor paintings into the Hurst Gallery... and an opening reception. Come meet the artists.

**14** Friends

**Monday, April 14**

Join the Friends for lunch in the Granary at noon with a program following featuring Heather Price, Executive Director of Sandhill Crane Vineyards and the topic, "National Wine Month." Phone in your reservation to the Museum by noon on Friday, April 11.

**17** Early Elementary Tours  
**Thursday-Friday, April 17-18**  
**and Tuesday-Friday, April 22-25**

The pitter patter of little feet fill the Museum studios and galleries during this Pre-School week of tours. Museum staff and volunteers read stories, give tours, and assist with "Make & Take" projects. For many of these little ones this is their very first visit to a Museum-- we're honored to open the doors to a future filled, we hope, with more Museum visits.



*If I don't get out of this tree soon I'll miss Lynne's party!*

**20** Lynne's  
Retirement  
Reception

**Sunday, April 20, 2-4 PM**

Stop in to wish outgoing Museum President Lynne Loftis well.

EXHIBIT OPENING  
& RECEPTION:  
**27** JCAA Biennial  
Exhibit

**Sunday, April 27, 2-4 PM**

Join the members of the Jackson Civic Art Association and congratulate their members who have work on exhibit in the Emmett Gallery.